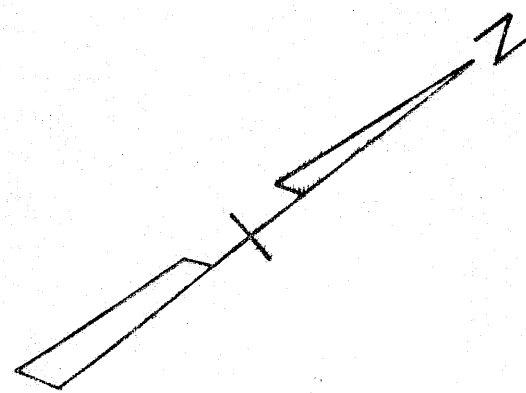
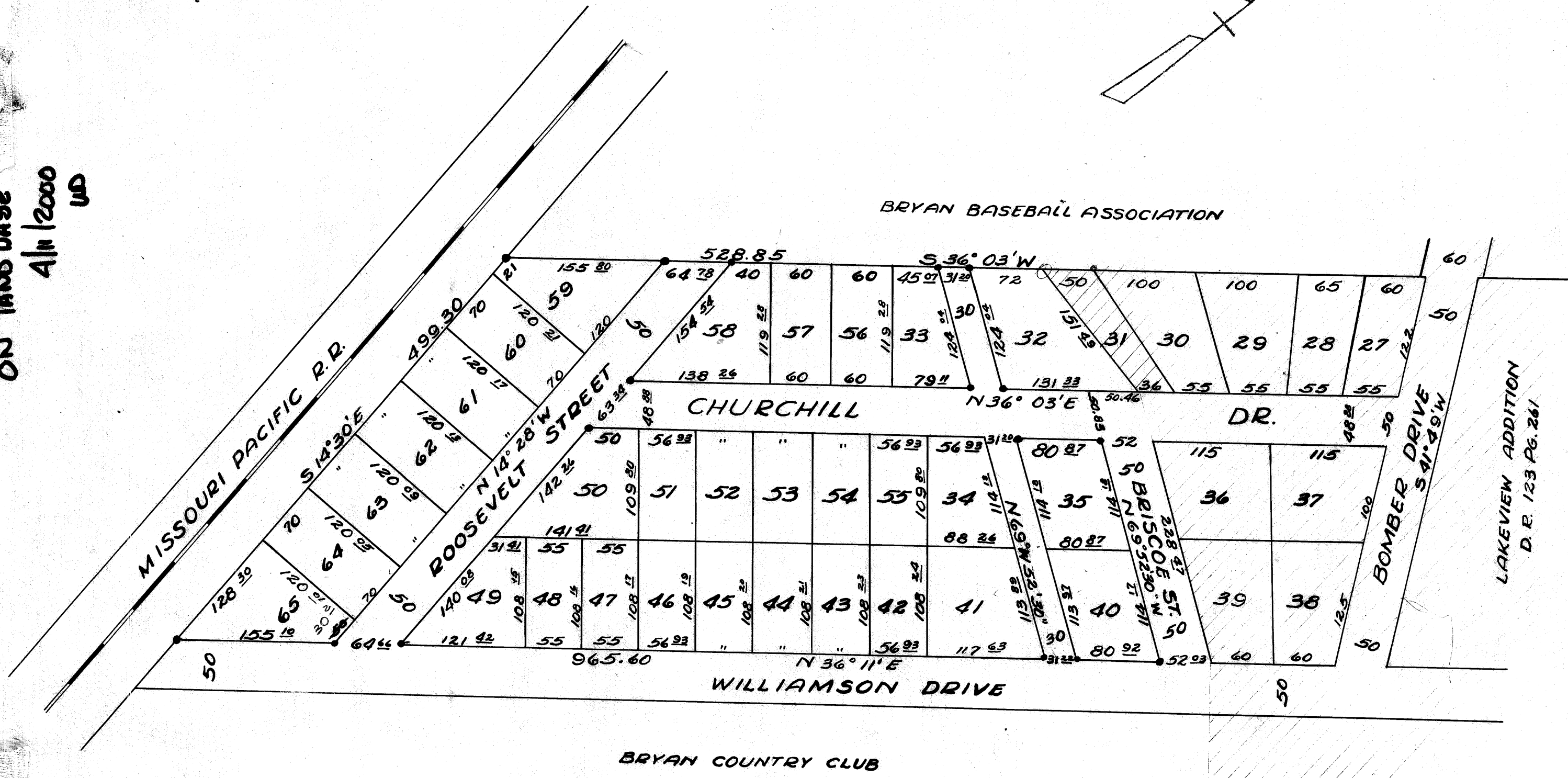


ON land base  
4/11/2000  
WD



A RESUBDIVISION OF  
South half of Lot 31, Lots 32 through 35, and  
Lots 40 through 66 of  
LAKEVIEW ADDITION  
TO THE CITY OF BRYAN  
D.R. 144 Pg. 615 FEB., '50  
Scale: 1" = 100'

NOTE: ● iron rod set in concrete  
▨ not a part of this resubdivision



211